

# **REVELATION AND REALITY**

*The Issue of Origins:  
Biblical, Philosophical and Scientific Perspectives  
Concerning  
The Truth about What is Real*

**Origins and Reality  
according to  
*Infallible Scripture and True Science***

Lecture #1. Foundations: The Battle of Authority

Lecture #2. The Primordial Cosmos: Part 1

Lecture #3. The Primordial Cosmos: Part 2

Lecture #4. The Young Solar System

Lecture #5. Carbon-14 Dating and True Science

Lecture #6. Deep Rocks Crush Deep Time

Lecture #7. The Noahic Flood

Lecture #8. The Post-Flood World

Lectures by: L.G. Redekopp

*The Bridge Bible Fellowship*

Summer 2020

Contact: [lg.redekopp@usc.edu](mailto:lg.redekopp@usc.edu)

## Review: Basics Concerning the Flood

### The Source of the Waters

- “fountains of the *great deep* burst open” (*Gen. 7:11*)
  - ◆ *Heb. “t<sup>e</sup>hom rabbâh”* → great abyss, great depth
  - ◆ “burst open” → broken up (KJV); *lit.*, cleaving open
- “Or who enclosed the sea with doors, when bursting forth, it went from the womb?” (*Job 38:8*)
  - ❖ Point of fact:  
The dominant source of the waters was *subterranean*

### The Receding of the Waters

Ref. *Gen. 8:1-5:*

- ◆ “... and the water subsided.”
- ◆ “... the water receded steadily from the earth”
- ◆ “... the ark rested upon the mountains of Ararat”
- ◆ “... the water decreased steadily ...”

Ref. *Ps. 104:5-9:*

- “The waters were standing above the mountains, ...”
- ◆ “... they fled;”
  - ◆ “... they hurried (hasted) away.”
  - ◆ “The mountains rose; ...”
  - ◆ “... the valleys sank down.”

❖ Point of fact:

the mountains rose up and the ocean basins  
sank down ... *rapidly* on geologic time scales

Paraphrase of *vs. 8*: “*The mountains rose up and  
great basins sank down.*”

### Questions:

- ◆ What are some of the key characteristics of the post-flood world?
- ◆ What can be discerned from both revelation and reality about the post-flood era?

## Revelation: The Early Post-Flood Era

“From these the coastlands of the nations were **separated (divided)** into their lands, every one according to his language, according to their families, into their nations.”  
*Gen. 10:5*

“These are the families of the sons of Noah, according to their genealogies, by their nations; and out of these the nations were **separated (divided)** on the earth after the flood.” *Gen. 10:32*

“And two sons were born to Eber; the name of the one was Peleg, for in his days **the earth was divided**; and his brother’s name was Joktan.” *Gen. 10:25*

“Who has cleft (divided)  
▪ [a channel for the flood (NASB)]  
▪ [the spouts for the rain (Geneva)]  
▪ [a watercourse for the overflowing of waters (KJV)], ... to bring rain on a land without man, a desert without man in it, ...?  
Has the rain a father?”  
*Job 38:25-28a*

“When the Most High gave the nations their inheritance, when He separated (divided) the sons of man, He set the boundaries of the peoples according to the number of the sons of Israel.” *Deut. 32:8*

### A Word Analysis

The root verb for “**separated (divided)**” in vs. 5 & 32 is “**parad**” (Heb)

The root verb for “**divided**” in vs. 25 is “**palag**” (Heb)

#### Questions:

Are each text referring to the same event? ... Confusion at Babel?

It is quite evident that vs. 5 & 32 refer to a **linguistic division**,

but might it be that vs. 25 refers to a distinct division → a **geologic division**?

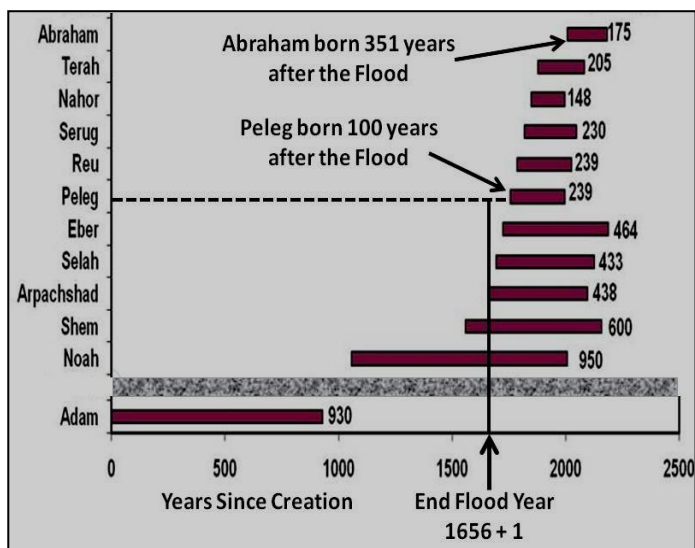
And, if so, are these two events necessarily contemporaneous?

The verb “cleft / divided” in *Job 38:25* is “**palag**” or “**pileg**” (Heb)

Note Context: overflowing rain

“**peleg**” → streams (*Job 29:6* NASB);  
rivers (*Job 29:6* Geneva, KJV)  
(so in multiple other references)  
[e.g., *Ps. 119:136; Prov. 5:16 Isa. 30:25*]

“Did the LORD rage against the rivers,  
or was Thine anger against the rivers,  
or was Thy wrath against the sea, ...  
**Thou didst cleave the earth with rivers.**  
The mountains saw Thee and quaked;  
**the downpour of waters swept by.**  
The deep uttered forth its voice, it lifted  
high its hands.” *Hab. 3:8-10*

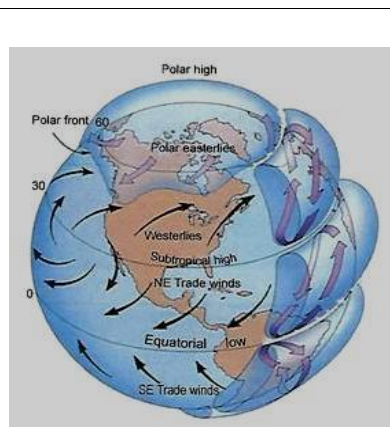
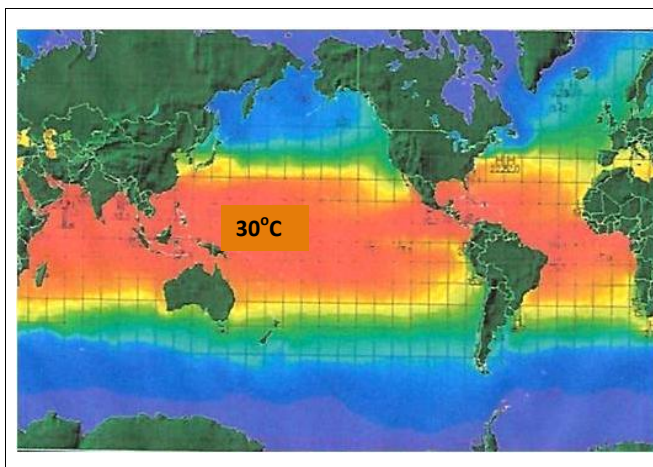


Peleg likely born during active growth of Ice Caps.

Abraham likely born around the peak of Ice Cap development.

“(Out of) whose womb has come the ice? ... Water becomes (hides itself) hard like a stone, and the surface (face) of the deep is imprisoned (frozen)”  
*Job 38:29-30*

Present Global Climate cannot stimulate an Ice Age



Key Question: What are the key global climate conditions conducive for onset of an Ice Age?

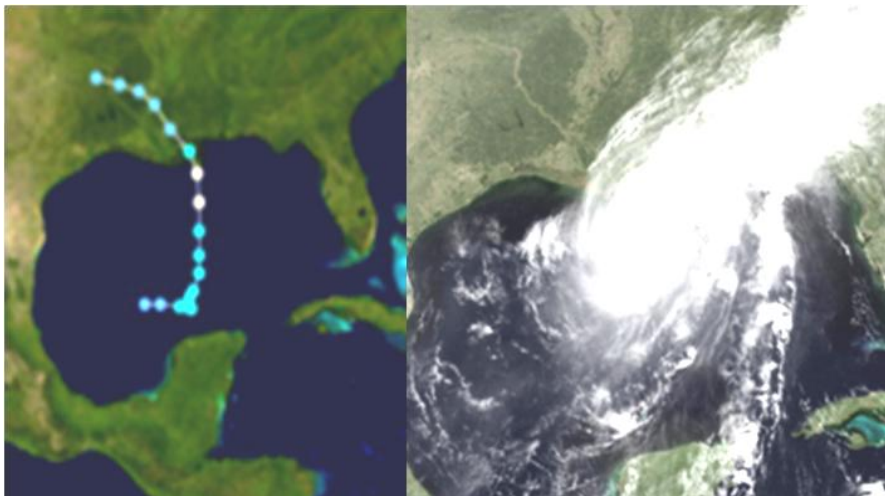
## Development of an Ice Age: Essential Requirements

### Key Requirements for Ice Cap Formation

- ❖ ***Cool Summers – Summer Temperatures are Critical***
  - ◆ Snow must survive the summer
    - snow volume must accumulate year after year
    - snow must change to ice (freeze – melt)
    - ice cover must advance southward, even below 40 °N
    - snow cover reinforces cooling – higher reflectivity
  - ◆ Summer temperatures must be dramatically reduced from present nominal for snow to survive
    - colder winters are not necessary – colder winters reduce precipitation/snowfall
  - ◆ Volcanic activity accentuates summer cooling
    - volcanic activity causes an “inverse greenhouse” effect – reduces surface heating via solar radiation
  
- ❖ ***A Sustained Source of Moisture***
  - ◆ A voluminous source of moisture leading to greatly enhanced snowfall must exist over a century or more
    - warm oceans greatly enhance the potential for evaporation
    - warm oceans greatly increase the capacity of the atmosphere to hold and transport water vapor
  - ◆ The absence of sea ice is probably essential
    - storm tracks shift away from the polar region as a cold high pressure region develops over the pole
    - sea ice forms an ocean cap, reducing access to available moisture

## Meteorological Impact of Warmer Sea Surface Temperature

### Part 1. Hurricane Florence (1988): Gulf of Mexico



#### Hurricane Florence (1988)

- Sea Surface Temp.  $\approx 30^{\circ}\text{C}$  ( $86^{\circ}\text{F}$ )
- Landfall: Miss. River Delta region
- Peak landfall winds  $\approx 80$  mph
- Peak rainfall  $\approx 11$  inches  
7 inches in So. Miss.  
10 inches in Fl. Panhandle
- Coastline surge: 20 – 30 ft.

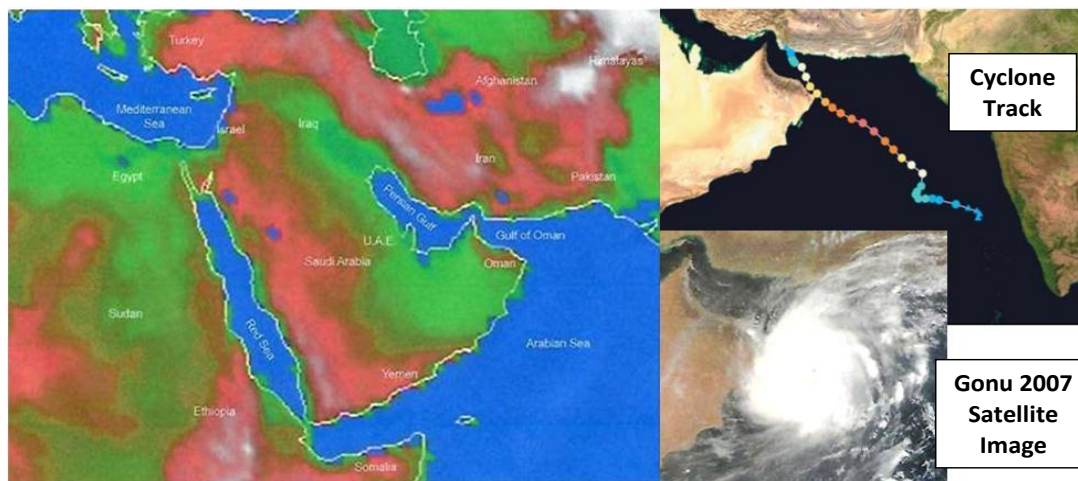
#### *Hyper*cane Florence (1988)

- Sea Surface Temp. =  $45^{\circ}\text{C}$  ( $113^{\circ}\text{F}$ )
- Peak landfall winds  $\approx 4 \times 80 > 300$  mph
- Peak vertical winds  $> 150$  ft/sec
- Rainfall rates  $> 10$  inches/hour
- Coastline surge: 80 – 100+ ft.

**Acknowledgment:** Multiple scholarly publications authored by L. Vardiman have been accessed in the organization of this lecture.

## Meteorological Impact of Warmer Sea Surface Temperature

### Part 2. Tropical Cyclone Gonu (2007): Arabian Sea



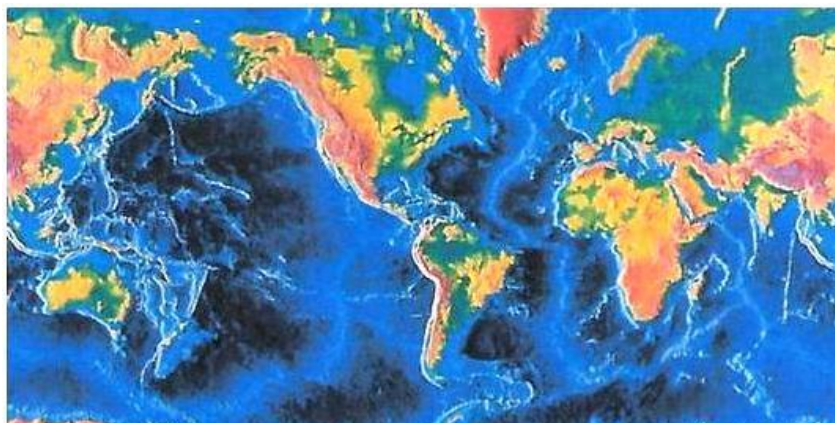
#### Cyclone Gonu (2007)

- Sea Surface Temp.  $\approx 30^{\circ}\text{C}$  ( $86^{\circ}\text{F}$ )
- Landfall: Iran in Gulf of Oman
- Gulf of Oman rainfall  $\approx 24$  in.

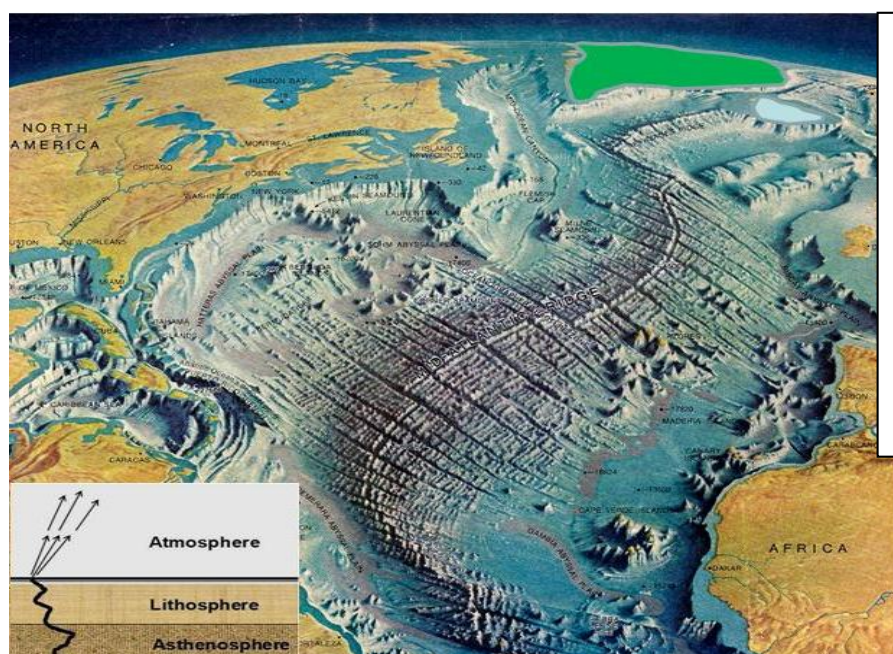
“And Lot lifted up his eyes and saw all the valley (plain) of the Jordan, that it was well watered everywhere—this was before the LORD destroyed Sodom and Gomorrah—like the garden of the LORD, like the land of Egypt as you go to Zoar.” *Gen. 13:10*

#### Hypercyclone Gonu (2007)

- Sea Surface Temp.  $= 40^{\circ}\text{C}$  ( $104^{\circ}\text{F}$ )
- Gulf of Oman rainfall  $\approx 48$  in.
- Total 18-day rainfall exceeded 40 in. along the eastern Mediterranean Sea (Israel – tip of Egypt to Lebanon)
- Local regions of 18-day rainfall in excess of 100 in. in Syria & Iraq
- Max. 48-hr precip.  $\rightarrow 48$  in. – 1in/hr (track from Arabian Sea to Pakistan)  
Total 18-day precip.  $\rightarrow 320$  in.
- Warm temps in the Red Sea and Mediterranean Sea combined to give a ‘storm effect’ extending for roughly 2500 miles – from Egypt to Pakistan



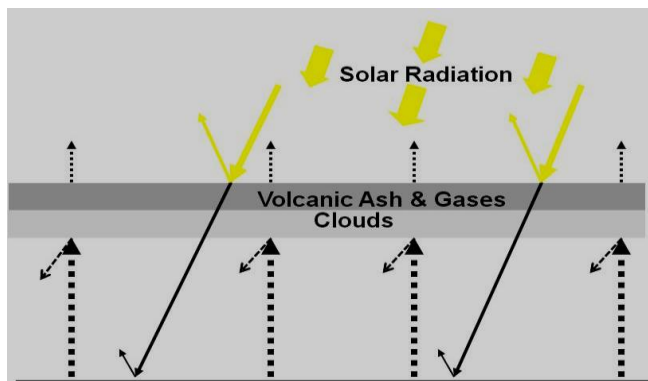
Lighter blue  
(whiter) lines  
mark sub-surface,  
mid-ocean ridges  
→ regions of  
ocean floor  
spreading and  
active venting  
of heated water.



Note strong  
mid-ocean ridge  
off Greenland  
and Iceland  
→ key site for  
heated water  
and enhanced  
precipitation  
for formation of  
Greenland  
Ice Cap.



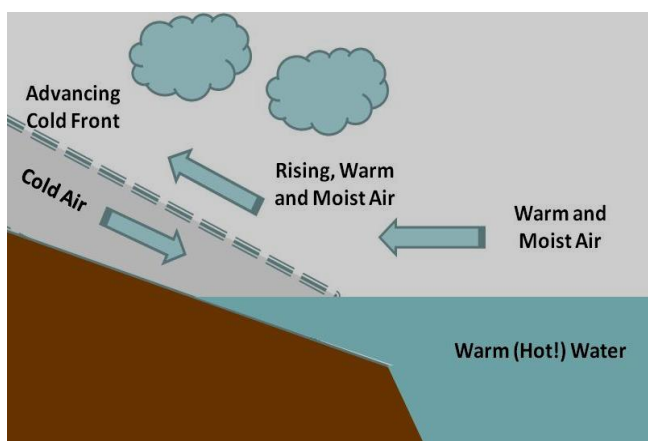
## The North American and Greenland Ice Sheets



Volcanoes are key to the onset of an ice age:

Why? → They promote cooler summer temperatures over land – diminishing summer melting.

Fact: Estimates based on land and ocean bottom surveys suggest that ≈ 50,000 volcanoes since the onset of the Flood.



Colder air intersecting warm, moist air over warm oceans stimulates strong, along-shore storms laden with moisture.

Weather forecast simulations show that warmer Atlantic temperatures dramatically increase wind speeds, precipitation levels, and frequency of Nor'easters along the eastern boundary of the USA and Canada.



### Data

Increasing the sea temp. by 10°C (18°F) doubled the snowfall over Newfoundland for the Feb. 5–6, 2010 Nor'easter (25 in. → 50 in.).

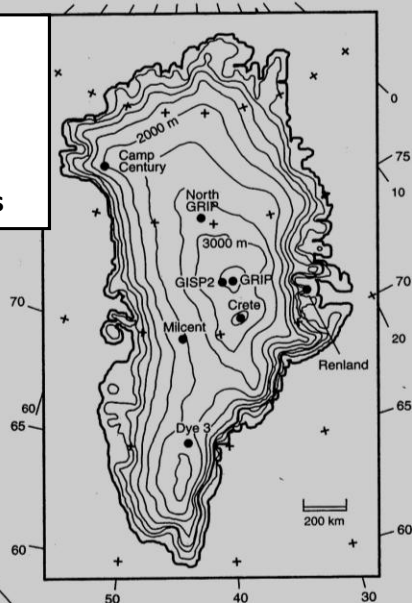
Ocean sediment drilling reveals that the oceans were at least 20°C (36°F) warmer in the past.

Simulations suggest that an enhanced Nor'easter could form every 3 – 4 days.

## Greenland and Antarctica Ice Sheets: Present Reality

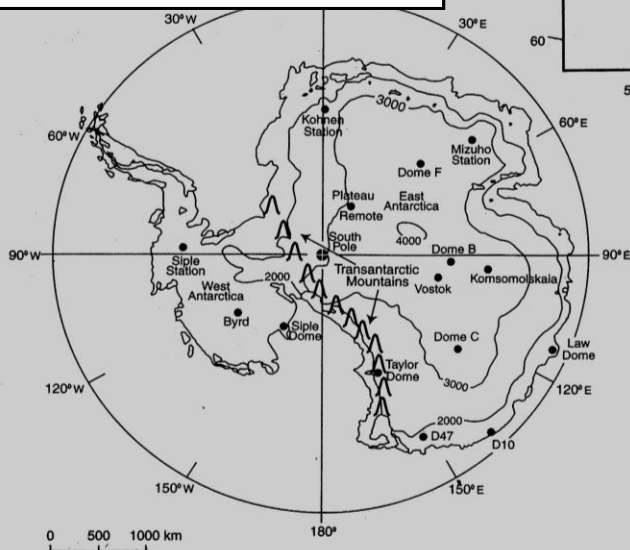
### Greenland Ice Sheet

avg. depth = 1600 m  
 max. depth = 3367 m  
 avg. precipitation  $\approx$  32 cm/yr  
 time to accumulate  $\approx$  5000 yrs



### Antarctic Ice Sheet

avg. depth = 1900 m  
 max. depth = 4200 m  
 avg. precipitation  $\approx$  18.6 cm/yr  
 time to accumulate  $\approx$  10,200 yrs



### Note:

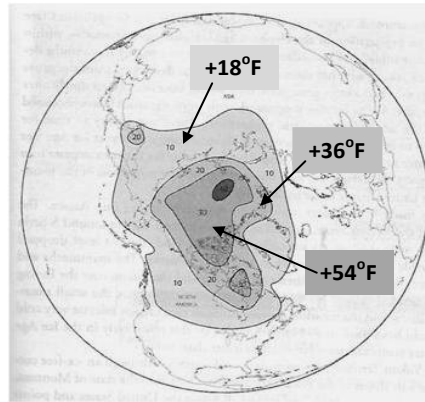
Greenland plus  
 Antarctica sheets  
 contain sufficient  
 ice to cover the  
 contiguous  
 48 states of the  
 USA to an  
 average depth  
 of  $\approx$  3000 m.

### Sea Level Rise if Ice Sheets Melted

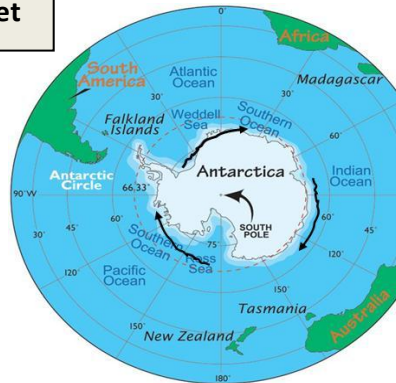
Greenland Sheet:  $\approx$  7 m  
 Antarctica Sheet:  $\approx$  61 m  
Total:  $\approx$  68 m



---  
Boundary of  
Laurentide Ice Sheet

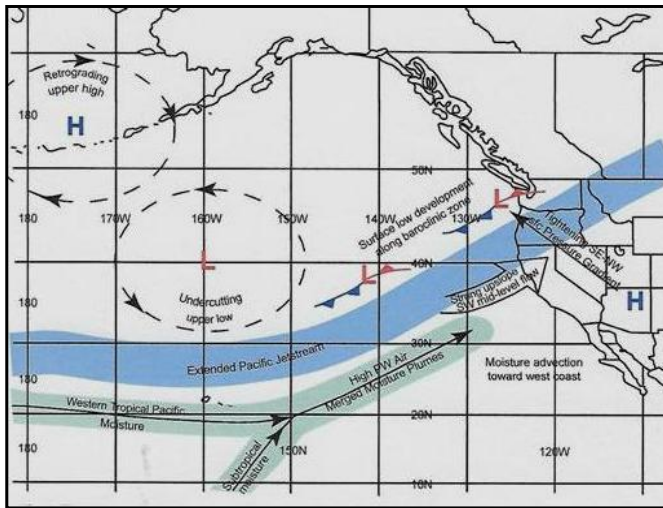


Winter temp. change if Arctic Ice Cap is removed (sea temp. at freezing)



Storm tracks around Antarctica with warmed ocean – akin to Nor'easter flow pattern.

**Glacier Formation: Yosemite National Park**



Climatologists suggest that the jet stream was displaced southward from Canada-US border to SF Bay area during ice age.

- Lower jet stream and Pineapple Express can set up a 6-fold precipitation increase.
- Warmer sea surface temperatures can double storm frequency.

**Result:** A glacier 3000 ft. thick can develop in 100 yrs.